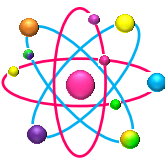


40

Studies

Social



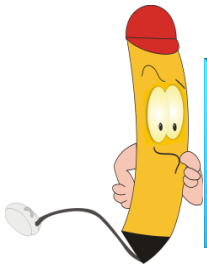
Know the contents

The Miami Virtual School, presented through texts for elementary education program and sequence of natural science content, enriched with several videos and subtopics. With this text handling you acquire attitudes, skills, abilities and concepts that allow you to expand your worldwide.

Your contents are grouped into four sessions containing topics and subtopics of several pages. Each topic begins with a title, a series of questions whose purpose is to arouse your interest in the contents, you can use these questions at the end of a topic to test your learning. You'll find images related to the concepts and themes, videos, charts, concept maps with didactic sense

The virtualitos help you journey through this adventure of knowledge.

Inquire to...



When you find this icon you know that there are many unanswered questions, which you can use at the end of a topic to find what you have learned.



When you find this icon you have to carry out the activities for each topic or subtopic.



Art is part of your activities, giving a personal touch when you go to color. Now you are the artist!



Virtualito invites you to learn more about the theme, research new things. That's interesting to know!



Did you know that...?
You'll find fun facts that invite you to learn about other related topics



Geographical regions of Colombia



Región del Caribe
Región del Pacífico
Región Andina
Región de la Orinoquía
Región de la Amazonía

The Colombian geographic space is very different, both in their natural elements: relief, climate, vegetation, wildlife, and in its cultural elements: customs, dialects, folk festivals, artistic expressions, among others, and in their economic elements: natural resources, activities production and trade.

Because of the diversity of natural, cultural and economic in Colombia, we can distinguish five (59 geographic regions

Caribbean Region



This region corresponds to the high plains of Colombia, bathed by the Caribbean Sea, to which it owes its name.

The Caribbean region is not completely homogeneous in topography and climate. This being a plain region has a flat topography and climate is warm. However, low and flat shapes are broken ground for a few small hills, such as the majestic Sierra Nevada de Santa Marta, which has the country's highest peaks.

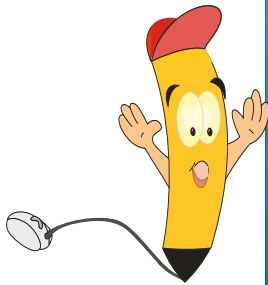




Unit 2

They are part of the Caribbean region the following departments: Archipelago of San Andrés, Providencia and Santa Catalina, Guajira, Sucre, Cesar, Córdoba, Atlántico, Magdalena and Bolivar.

In the departments of the region, except for the Guajira, agriculture is an important economic activity. They represent high livestock production, its mineral wealth depicted in sea salt, oil, natural gas and large amounts of nickel and coal.



You know that?

The Sierra Nevada de Santa Marta, is the highest elevation in the world coastline. It has a triangular shape and has an area of approximately 17.000Km². It also presents all thermal, therefore great variety of flora and fauna.



Folclor

The joyous and festive nature has produced a rich coastal folklore, manifested primarily through music and dance.

The most important festival of Colombia, is the Carnival of Barranquilla. Four days of dancing, costumes, dances, parades, masks and popular joy.





Pacific Region

It is located to the west of the country and is divided into two main areas.

This region is also called "Pacific Coast", is located to the west of the country, in the middle of the western mountain range and the Pacific Ocean.

The Pacific region consists of the Choco department and the coastal region of Valle del Cauca, Cauca and Nariño.

Geographically, the Pacific region is not homogeneous, but as general characteristics we note the following: a very rainy region of flood-prone lowlands, blazing weather, excessive humidity and jungle vegetation. It is crossed by numerous rivers, short and torrential and, therefore, unsuitable for navigation.



The Cabo Corrientes Pacific coast divided into two different sectors: the North Coast or Pacific High extends from Cabo Corrientes to the border with Panama. Is high and rocky, wet and rainforest vegetation.

The South Coast is low, flat, swampy and excessive moisture, its vegetation is made up of mangroves.





Unit 2

The people of the Pacific region are descendants of the Chibcha, Carib and black Africans who were brought during the colony as slaves. The largest ethnic group is the black. The indigenous population is comprised by about Choco, cribs, Embera, noanamá, citaraes and Tumacos.



Gorgona Island



Embera Katios

FOLCLORE

The main dances and musical airs of this region are currulao the patacoré, the berejú, dance, the quadrille, the Jack Choco, the aguabajo, the maquerule and bunde.



The currulao is the most prominent dance. For its African origin, we can say that is a sister dance cumbia, and mapalé bullerengue.





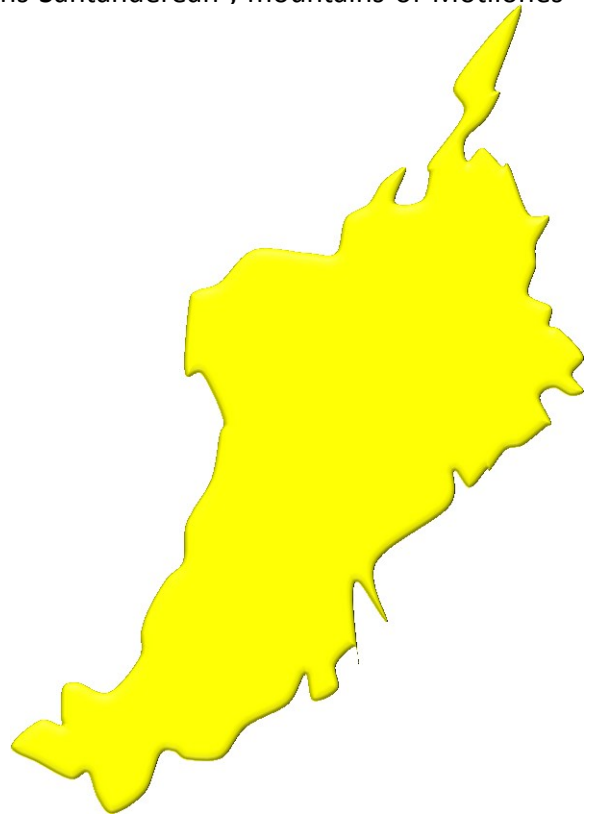
Andean Region

This region corresponds to the territory enclosing the Andes mountains on his tour of Colombia. It extends south to north from the border with Ecuador to the plains of the Caribbean, and from west to east, from the lower slopes of the Cordillera Occidental to the external side of the Eastern Cordillera.

It is a heterogeneous region in its terrain, climate and vegetation. With regard to the relief no predominance of higher forms (mountains, glaciers, volcanoes), but there are all the other known forms: valleys, depressions, semi-deserts. The variety of the relief results in different climatic zones. The geographical diversity of the Andean region it allows us to distinguish the following regions: South massifs (Knot of the Grass and Colombian Massif), Cauca River valley, valley of the Magdalena River, mountains of Antioquia and Caldas, Cundinamarca and Boyacá highlands, mountains Santanderean , mountains of Motilones and Catatumbo basin.



The Andean region is the largest economic development has varied and important mineral resources for its diversity of soils and climates has developed a large agricultural and livestock production, has major industrial and commercial centers of the country.





Amazonic Region

Colombia Amazon is surrounded from north to south from Guaviare to Amazon rivers and Putumayo; from east to west from eastern mountains to the Brasil border.

In this region could be found the following National Parks: isla La Corota, La Paya, Los Picachos, Chiribiquete, La Macarena, Cahuinau, Tinigua, Amacayacu, Traira, Nukak and Puinawai.

Amazon's naturally is gigantic plain with hill formations in several places.. The climate is a classic rain forest with wet jungle, where it is hot and rainy all year.

Through Amazon region run several important rivers: Amazon, Caquetá and Putumayo.



Amazons is a second less populated area. It has 336.000 Km² with 3 persons at square kilometer. Also it is unprotected due to its abundance in wood.





The region of the Orinoco

Better known as the eastern plains, is comprised from west to east, between the Eastern Cordillera and north to south, between the rivers Arauca and Guaviare.

The parks found in the Orinoco are Tuparro, which is the most important, is also part of the parks: Sumapaz, Picacho, Macarena, Chingaza and Cocuy.

The Orinoco comprises four departments: Meta, the largest in the country, Arauca, Casanare, Vichada and Guanía.

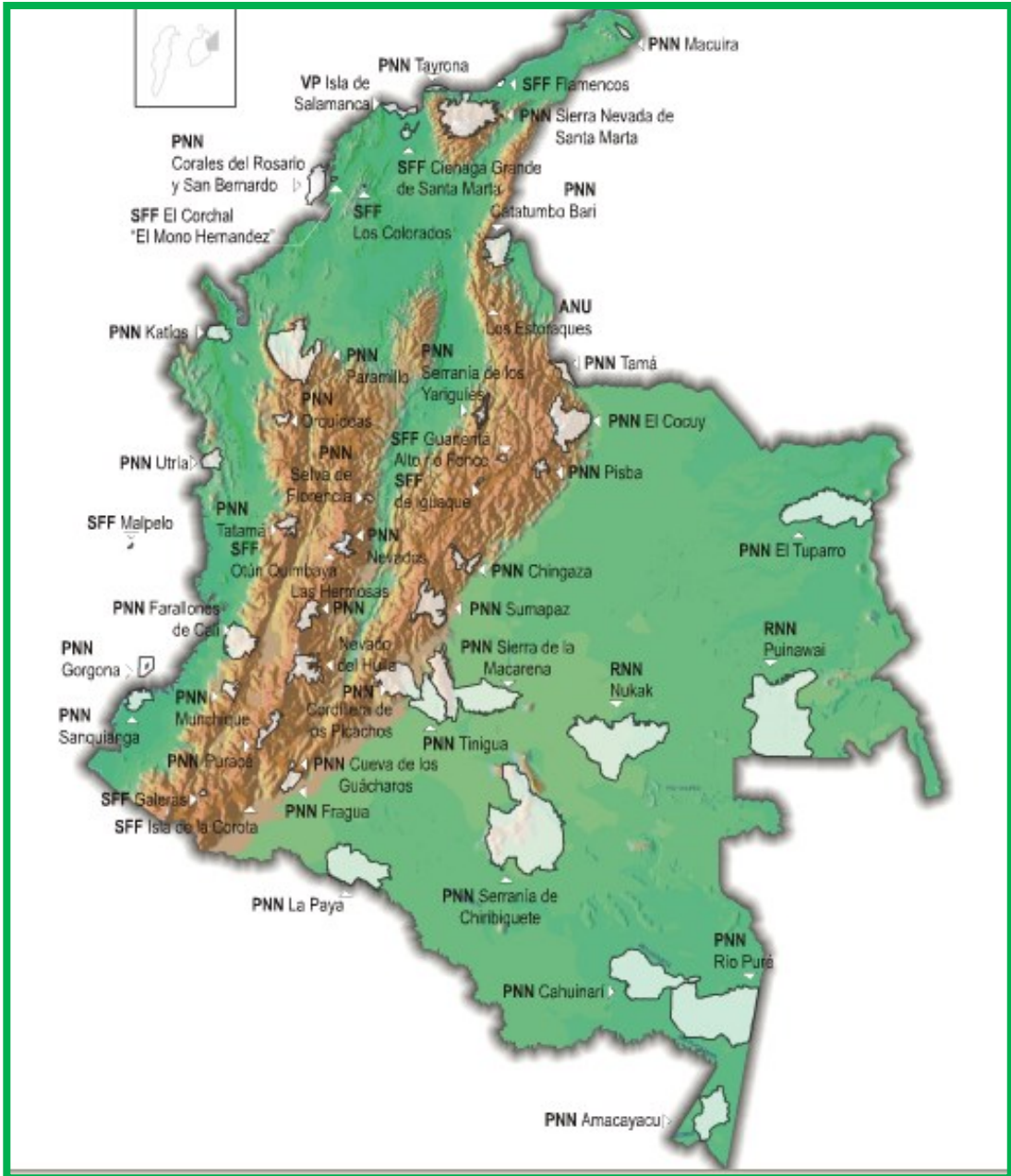
The Eastern Plains are a vast plain interrupted in some areas, small elevations. The climate is tropical savanna dela with high temperatures, abundant rainfall and a herbaceous and grass (pasture)





Unit 2

Natural Parks of Colombia





Unit 2

