



# 1 COMPUTER SCIENCE





# Content

<u>Topic</u>	1
<u>Machine. What is this?</u>	2
<u>Technological devices</u>	3
<u>Home electric devices</u>	7
<u>Abacus</u>	15

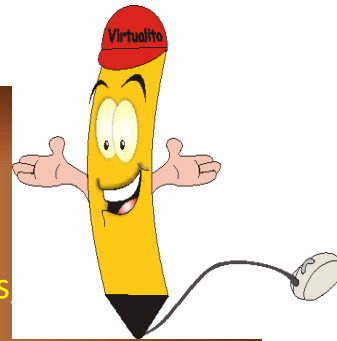




# TOPICS UNIT 1

## TOPICS

- Machine. What is it?
- Understanding of technological devices and elements.
- Technology at school: acrylic blackboard, special seats, fans machine.
- Home electric devices: TV, recorder, phone, freezer, iron, blender, stove and many others...



## COMPETENCES AND ACHIEVEMENT INDICATORS

### CONCEPTUAL ACHIEVEMENT

Identifies the parts of the computer that belong to hardware

### PROCEDIMENTAL ACHIEVEMENT

Talks about the concept of Hardware and gives clear examples of it.

Makes differences between hardware and software

Uses Start Button to run different programmes

Applies the mouse functions to roll the screen

Opens and closes programmes easily.

Creates and names folders

### ATTITUDINAL ACHIEVEMENT

Values hardware and software functions to do different activities

You should know that

COMPUTERS ARE VERY USEFUL  
FOR US, PEOPLE.



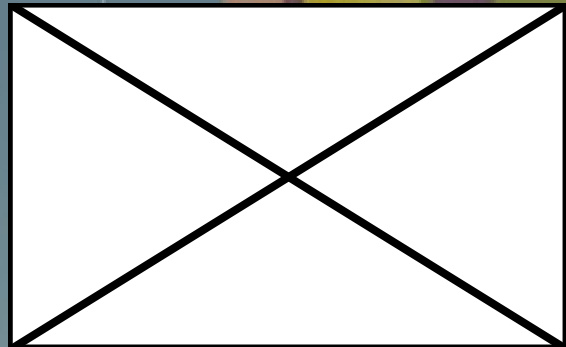
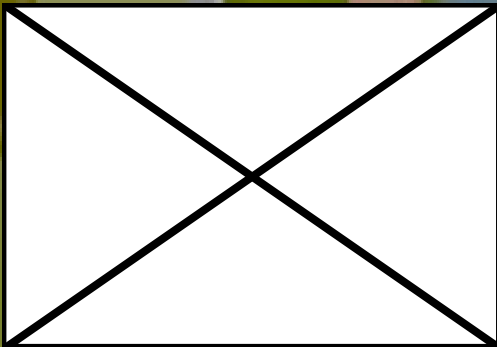
## WHAT IS THE MACHINE?

A machine is an object or device which simplifies the job.

It is a man's invention to reduce efforts required to complete the task.

## COMPUTER IS A MACHINE

COMPUTER IS A MACHINE CAPABLE TO PROCESS INFORMATION AND DATA OFFERING RESULTS.





# TECHNOLOGICAL DEVICES

TECNOLOGICAL  
DEVICES ALSO ARE  
MACHINES,  
HELPING US IN  
EVERYDAY LIFE.

HAVE A LOOK AT  
SOME OF THEM,  
TECHNOLOGICAL  
DEVICES TO BE  
FOUND AT HOME

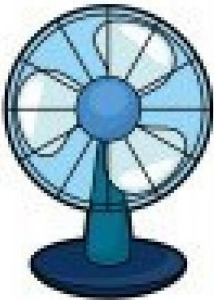




RICEMAKER, A POT  
TO COOK RICE



VACUUM CLEANER  
TO REMOVE DUST



FAN TO MOVE AIR

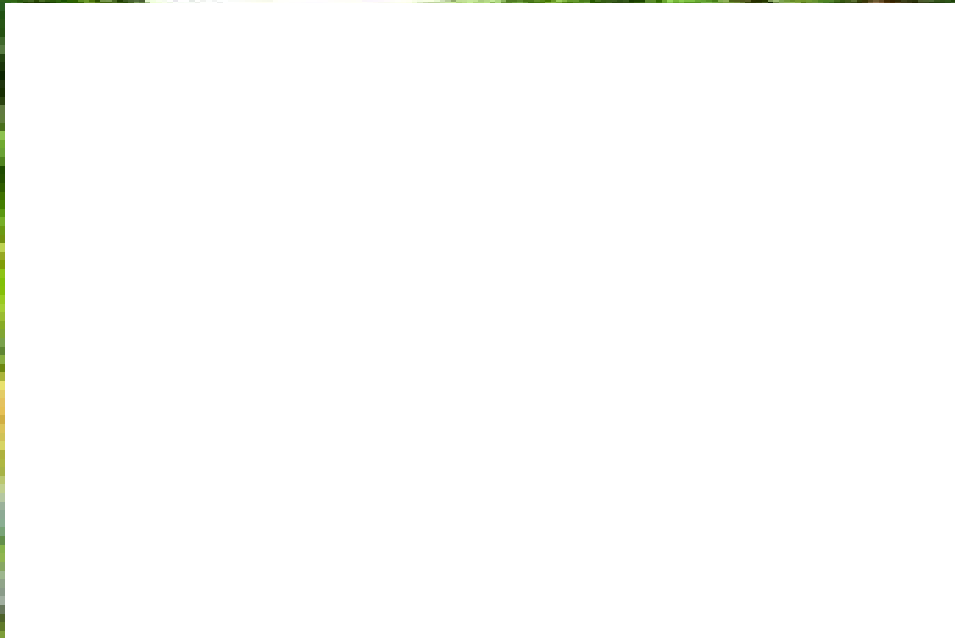


LAMP TO LIGHT UP  
THE WORK PLACE





What these devices are doing?  
They cook rice, clean dust, bring some  
fresh air and light at dark.



Can you show the difference between  
antique and modern home electric  
appliances and devices?



Even if machines help us with house keeping, we should not forget about ecology while using them.

These videos can give you some ideas:

<http://www.youtube.com/watch?v=VC3C8eQgeE>  
<http://www.youtube.com/watch?v=VC3C8eQgeE>



We have to use electric home devices wisely and efficiently.

What does it mean - Efficiency?  
It means to reach the goal using available tools where and when we can do it.







So, what does the words HOME ELECTRICAL DEVICE mean?

The Home Electrical Device is a machine responsible for some elementary jobs at home, like cooking, saving food or cleaning.



Yes, we do have a lots of them in our house

And we do have them at school also!





At school we also need technological objects helping us in our everyday jobs. Here are some of them:

Our sits and chairs


Typewriters

Copy machine

Blackboards

Phones





And outside the house, where can I find a technology?

Clear you can. They are everywhere, machines and technology!

What are they?

Cars

I know one too: Neon lights!

Traffic lights

Yes indeed.  
We are surrounded by technology!



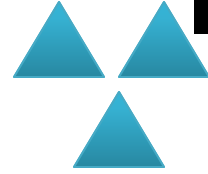


# ACTIVITY 1



Machine →

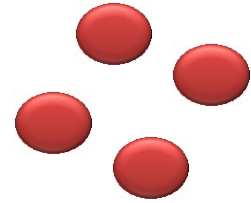
- DEVICE
- OBJECT
- PERSON
- BUILDING



**Draw a triangle at the side of an option which you are considering to be correct**

TECHNOLOGY IS: →

- MACHINE
- DEVICE
- SOMETHING SOFT
- DESIGN



**Draw a circle around the options which look to be correct ones**

**Para mover los triángulos o círculos, colocas el puntero sobre ellos y con el botón primario o izquierdo oprimido lo mueves.**



## ACTIVITY 2



**ANOTHER HOME ELECTRICAL  
DEVICES ARE:**

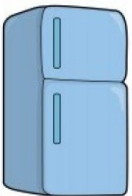
**DRAW A LINE CONNECTING A  
DEVICE WITH THE MOST  
APROPRIATE DESCRIPTION**



**To listen the  
music**



**Keeping food fresh**



**Prepair a fresh  
juice**



**Dry the hair**



# ACTIVITY 3



Traffic lights are used for:

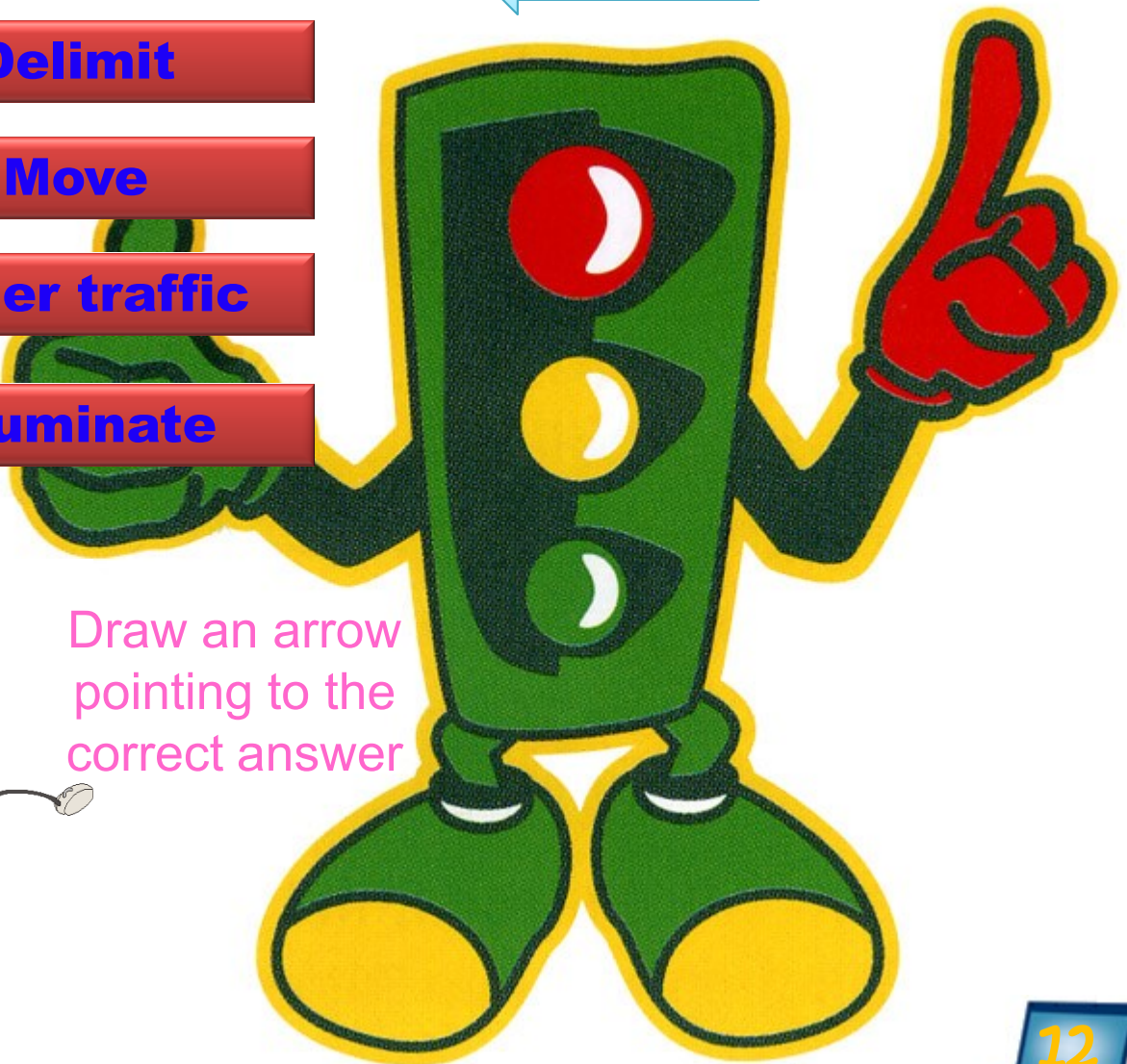
Warn

Delimit

Move

Order traffic

Illuminate



Draw an arrow  
pointing to the  
correct answer





Some other devices for  
looking for the help



To see the  
news

Connect  
objects and  
their  
descriptions



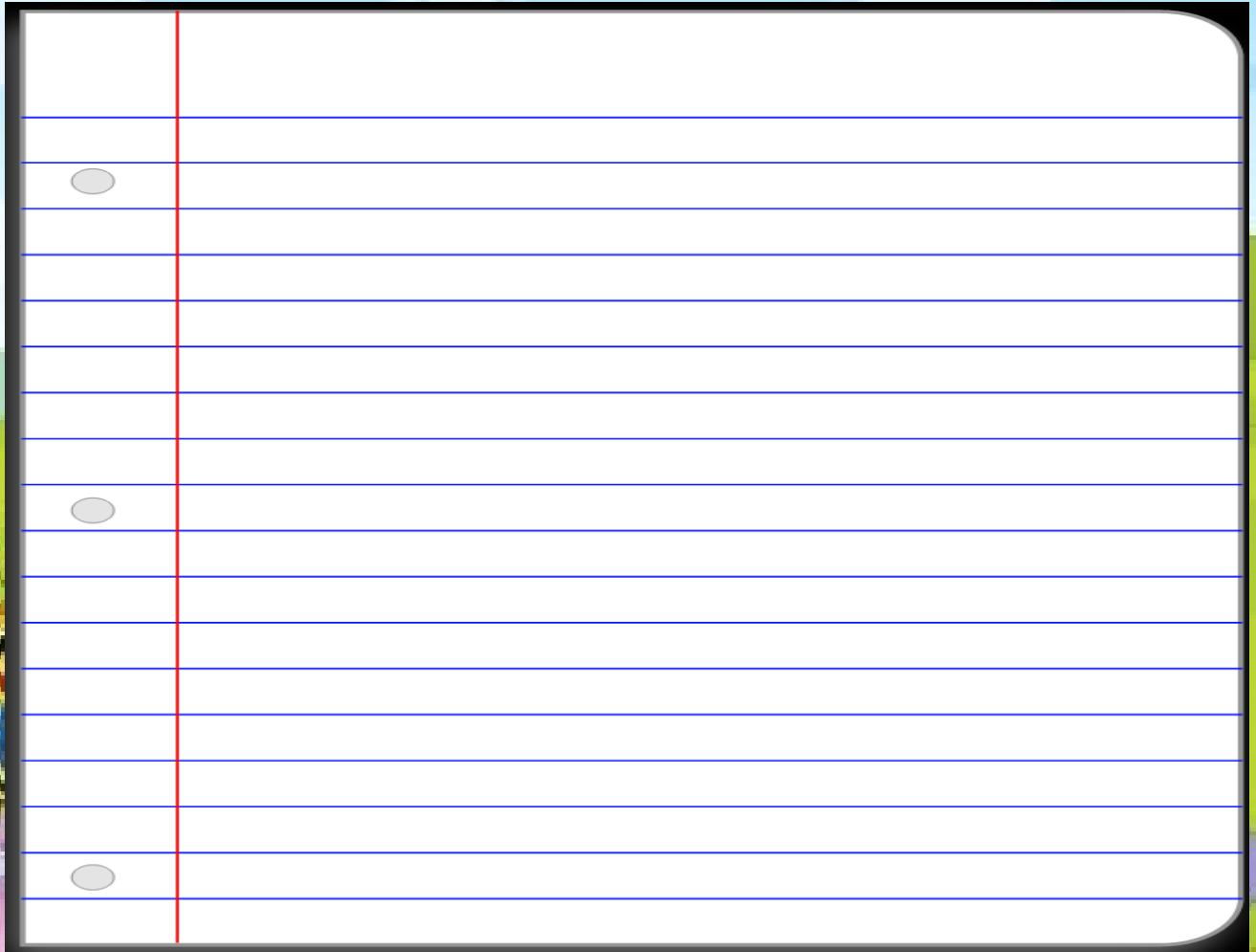
To see  
current time

To iron  
clothers



To make  
clothers





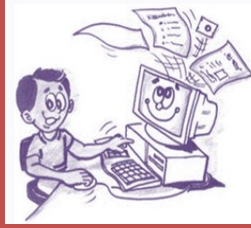
A large, blank sheet of lined paper with a red margin line on the left side, set against a background of a green field with flowers and a blue sky with clouds.

Look at the Video

[http://www.youtube.com/watch?v=UFwWWsz\\_X9s](http://www.youtube.com/watch?v=UFwWWsz_X9s)  
and write down the names of all machines  
and technical devices which you were able  
to recognise.







# Computer is a big human invention

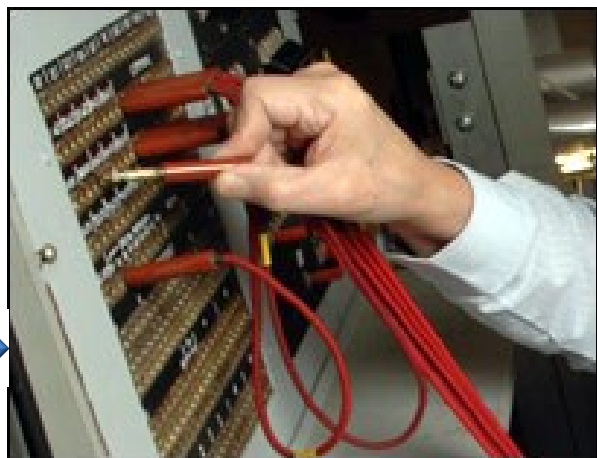
Do you know why it was created?

Not many people really know why computer was invented

The first computer was invented and built to decrypt enemy messages during the second World War

It had a size of a truck

It was called COLOSSUS





Do you know what ABACUS is?

It was a first tool created by man to simplify calculations

Abacus is an instrument helping with basics calculations and totals

Nowadays his ancestor is used to calculate points in billiards

Special Abacus is used to teach small children to read



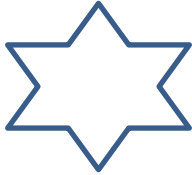
# ACTIVITY 4

## TRUE OR FALSE?

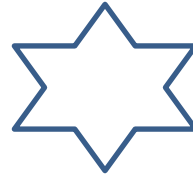
Can we think that Abacus was a first kind of computer?



Color the star with the correct answer



FALSE



TRUE



